



**Sirius**

PRICE LIST  
2018



LISTINO PREZZI - PRODOTTI ENERGY LABEL  
PRICE LIST - ENERGY LABEL PRODUCTS

## CAPPE A ISOLA / DECORATIVE ISLAND



SILT 27 HIVE



SILT 28 ROLL



SILT 26 DERUTA



SILT18



SILT21



MO 406



MO 404



MO 405



SIL 24 TC



SIL 24



**SILT 27 HIVE**

formato/size cm Ø 69  
finitura/finishing copper, silver,  
gold, white painted ceramic  
prezzo/price € 2.480,00

**SILT 28 ROLL**

formato/size cm Ø 48  
finitura/finishing copper, black,  
gold, white painted  
prezzo/price € 1.302,00

**SILT 28 ROLL lamp**

formato/size cm Ø 48  
finitura/finishing copper, black,  
gold, white painted  
prezzo/price € 930,00

**SILT 26 DERUTA**

formato/size cm Ø 69  
finitura/finishing copper, silver,  
gold, white, black painted ceramic  
prezzo/price € 2.325,00

**SILT 26 DERUTA lamp**

formato/size cm Ø 69  
finitura/finishing copper, silver,  
gold, white, black painted ceramic  
prezzo/price € 1.705,00

**SILT 21**

formato/size cm Ø 55  
finitura/finishing brushed inox  
prezzo/price € 1.519,00

**SILT 21**

formato/size cm Ø 55  
finitura/finishing painted  
stainless steel  
prezzo/price € 1.612,00

**MO 406**

formato/size cm Ø 40  
classe energetica/energy class B  
finitura/finishing polished stainless  
steel / inox  
price/price € 1.442,00

**MO 406**

formato/size cm Ø 40  
classe energetica/energy class B  
finitura/finishing polished stainless  
steel / black glass  
prezzo/price € 1.503,00

**MO 404**

formato/size cm Ø 36,2  
classe energetica/energy class A  
finitura/finishing inox  
prezzo/price € 1.287,00

**MO 405**

formato/size cm 40x40  
classe energetica/energy class A  
finitura/finishing inox  
prezzo/price € 1.364,00

**SIL 24 TC**

formato/size cm 90x60  
classe energetica/energy class A  
finitura/finishing inox / glass  
prezzo/price € 1.333,00

**SIL 24**

formato/size cm 90x60  
classe energetica/energy class A  
finitura/finishing inox  
prezzo/price € 1.240,00

**SILT 18**

formato/size cm Ø 48  
finitura/finishing polished stainless  
steel - ambient light / black  
prezzo/price € 2.077,00



SLT 970 FRAME



SLT 971 LESS



SLT 967 SHAPE



SLT 966 POD



SLT 962 RING



SLT 960



SLT 968



SLT 958



SLT 951

**SLT 970 EM FRAME**

formato/size cm 100x60

classe energetica/energy class **B**

finitura/finishing **white**

prezzo/price € 1.287,00

**SLT 970 FRAME**

formato/size cm 100x60

classe energetica/energy class **B**

finitura/finishing **white**

prezzo/price € 1.488,00

**SLT 970 FRAME Brushless**

formato/size cm 100x60

classe energetica/energy class **A**

finitura/finishing **white**

prezzo/price € 1.720,00

**SLT 971 LESS EM**

formato/size cm 90x55

classe energetica/energy class **B**

finitura/finishing **white / inox**

prezzo/price € 1.054,00 (white glass)

prezzo/price € 1.023,00 (inox)

**SLT 971 LESS**

formato/size cm 90x55

classe energetica/energy class **B**

finitura/finishing **white / inox**

prezzo/price € 1.255,00 (white glass)

prezzo/price € 1.255,00 (inox)

**SLT 971 LESS Brushless**

formato/size cm 90x55

classe energetica/energy class **A**

finitura/finishing **white / inox**

prezzo/price € 1.488,00 (white glass)

prezzo/price € 1.457,00 (inox)



**SLT 971 LESS EM 120**

formato/size cm 120x65  
classe energetica/energy class **B**  
finitura/finishing **white / inox**  
prezzo/price € 1.194,00 (white glass)  
prezzo/price € 1.132,00 (inox)

**SLT 971 LESS 120**

formato/size cm 120x65  
classe energetica/energy class **B**  
finitura/finishing **white / inox**  
prezzo/price € 1.395,00 (white glass)  
prezzo/price € 1.333,00 (inox)

**SLT 971 LESS 120 Brushless**

formato/size cm 120x65  
classe energetica/energy class **B**  
finitura/finishing **white / inox**  
prezzo/price € 1.628,00 (white glass)  
prezzo/price € 1.566,00 (inox)

**SLT 967 EM SHAPE**

formato/size cm 100x65  
classe energetica/energy class **B**  
finitura/finishing **white**  
prezzo/price € 1.426,00

**SLT 967 SHAPE**

formato/size cm 100x65  
classe energetica/energy class **C**  
finitura/finishing **white**  
prezzo/price € 1.628,00

**SLT 967 SHAPE Brushless**

formato/size cm 100x65  
classe energetica/energy class **B**  
finitura/finishing **white**  
prezzo/price € 1.845,00

**SLT 966 EM POD**

formato/size cm 100x65  
classe energetica/energy class **A**  
finitura/finishing **white**  
prezzo/price € 1.473,00

**SLT 966 POD**

formato/size cm 100x65  
classe energetica/energy class **B**  
finitura/finishing **white**  
prezzo/price € 1.674,00

**SLT 966 POD Brushless**

formato/size cm 100x65  
classe energetica/energy class **B**  
finitura/finishing **white**  
prezzo/price € 1.907,00

**SLT 962 EM RING**

formato/size cm Ø 90  
classe energetica/energy class **B**  
finitura/finishing **copper / white**  
prezzo/price € 1.829,00

**SLT 962 RING**

formato/size cm Ø 90  
classe energetica/energy class **C**  
finitura/finishing **copper / white**  
prezzo/price € 2.015,00

**SLT 960 EM**

formato/size cm 110x65  
classe energetica/energy class **B**  
finitura/finishing **inox / white glass**  
prezzo/price € 1.612,00

**SLT 960**

formato/size cm 110x65  
classe energetica/energy class **B**  
finitura/finishing **inox / white glass**  
prezzo/price € 1.798,00

**SLT 968 EM H200**

formato/size cm 110x65  
classe energetica/energy class **B**  
finitura/finishing **inox / white glass**  
prezzo/price € 1.271,00 (white glass)  
prezzo/price € 1.194,00 (inox)

**SLT 968**

formato/size cm 110x65  
classe energetica/energy class **A**  
finitura/finishing **inox / white glass**  
prezzo/price € 1.333,00 (white glass)  
prezzo/price € 1.426,00 (inox)

**SLT 968 H 200**

formato/size cm 110x65  
classe energetica/energy class **C**  
finitura/finishing **inox / white glass**  
prezzo/price € 1.473,00 (white glass)  
prezzo/price € 1.395,00 (inox)

**SLT 958 EM**

formato/size cm 44x90  
classe energetica/energy class **B**  
finitura/finishing **inox / white glass**  
prezzo/price € 1.054,00

**SLT 958 EM WHITE**

formato/size cm 44x90  
classe energetica/energy class **B**  
finitura/finishing **inox / white glass**  
prezzo/price € 1.147,00

**SLT 958**

formato/size cm 44x90  
classe energetica/energy class **A**  
finitura/finishing **inox**  
prezzo/price € 1.240,00

**SLT 958 WHITE**

formato/size cm 44x90  
classe energetica/energy class **A**  
finitura/finishing **inox / white glass**  
prezzo/price € 1.333,00

**SLT 958 H 200**

formato/size cm 44x90  
classe energetica/energy class **B**  
finitura/finishing **inox / white glass**  
prezzo/price € 1.349,00 (white glass)  
prezzo/price € 1.250,00 (inox)

**SLT 958 H 200 Brushless**

formato/size cm 44x90  
classe energetica/energy class **B**  
finitura/finishing **inox / white glass**  
prezzo/price € 1.581,00 (white glass)  
prezzo/price € 1.473,00 (inox)

**SLT 951 EM**

formato/size cm 110x700  
classe energetica/energy class **C**  
finitura/finishing **inox**  
prezzo/price € 1.426,00



SDD18 BALANCE



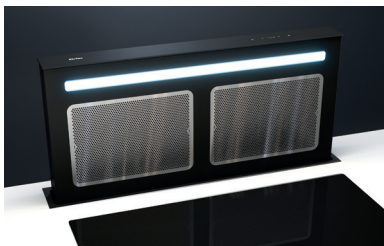
SDD13 SUNRISE



SDD16 ESSENCE



SDD17 JOLLY



SDD12 TC SMOOTH



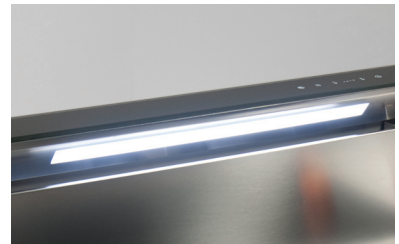
SDD11 PUSH UP



SDD2



SDD2 TC



SDD2 LED



SDD2 L



SDD2 TC/L



SDD4 TC



SDD3 TC



UP-RIGHT BUILT-IN VERSION



**SDD18 EM BALANCE**

formato/size **cm 82**  
classe energetica/energy class **A**  
finitura/finishing **black, white**  
prezzo/price € **2.418,00 (black)**  
prezzo/price € **2.511,00 (white)**

**SDD13 EM SUNRISE**

formato/size **cm 82**  
classe energetica/energy class **A**  
finitura/finishing **copper, gold**  
prezzo/price € **2.418,00**

**SDD16 EM ESSENCE**

formato/size **cm 84,5**  
classe energetica/energy class **A**  
prezzo/price € **1.085,00**

**SDD17 EM JOLLY**

formato/size **cm 52**  
classe energetica/energy class **A**  
finitura/finishing **black, inox**  
prezzo/price € **1.023,00**

**SDD12 TC EM SMOOTH**

formato/size **cm 87**  
classe energetica/energy class **B**  
finitura-prezzo/finishing-price  
**glass / white**€ **2.356,00**  
**glass / black**€ **2.294,00**  
**glass / inox**€ **2.232,00**

**SDD11 EM PUSH UP**

formato/size **cm 81**  
classe energetica/energy class **B**  
finitura-prezzo/finishing-price  
**glass / white**€ **1.240,00**  
**glass / black**€ **1.240,00**  
**glass / inox**€ **1.178,00**

**SDD2 EM**

formato/size **cm 58**  
classe energetica/energy class **A**  
finitura/finishing **inox**  
prezzo/price € **1.783,00**

**SDD2 EM**

formato/size **cm 86**  
classe energetica/energy class **B**  
finitura/finishing **inox**  
prezzo/price € **1.907,00**

**SDD2 TC EM**

formato/size **cm 58**  
classe energetica/energy class **A**  
finitura/finishing **inox / glass**  
prezzo/price € **1.845,00**

**SDD2 TC EM**

formato/size **cm 86**  
classe energetica/energy class **B**  
finitura/finishing **inox / glass**  
prezzo/price € **2.000,00**

**SDD2 LED EM**

formato/size **cm 86**  
classe energetica/energy class **B**  
finitura/finishing **inox**  
prezzo/price € **2.201,00**

**SDD2 TC LED EM**

formato/size **cm 86**  
classe energetica/energy class **B**  
finitura/finishing **inox / glass**  
prezzo/price € **2.294,00**

**SDD2 L EM**

formato/size **cm 58**  
classe energetica/energy class **B**  
finitura/finishing **inox**  
prezzo/price € **2.015,00**

**SDD2 L EM**

formato/size **cm 86**  
classe energetica/energy class **B**  
finitura/finishing **inox**  
prezzo/price € **2.124,00**

**SDD2 L EM**

formato/size **cm 116**  
classe energetica/energy class **B**  
finitura/finishing **inox**  
prezzo/price € **2.666,00**

**SDD2 TC/L EM**

formato/size **cm 58**  
classe energetica/energy class **B**  
finitura/finishing **inox / glass**  
prezzo/price € **2.139,00**

**SDD2 TC/L EM**

formato/size **cm 86**  
classe energetica/energy class **B**  
finitura/finishing **inox / glass**  
prezzo/price € **2.232,00**

**SDD2 TC/L EM**

formato/size **cm 116**  
classe energetica/energy class **B**  
finitura/finishing **inox / glass**  
prezzo/price € **2.759,00**

**SDD4 TC EM**

formato/size **cm 86**  
classe energetica/energy class **B**  
finitura/finishing **inox / glass**  
prezzo/price € **2.403,00**

**SDD3 TC EM**

formato/size **cm 52**  
classe energetica/energy class **A**  
finitura/finishing **inox / glass**  
prezzo/price € **1.938,00**

**UP-RIGHT EM**

formato/size **cm 90**  
classe energetica/energy class **A**  
finitura/finishing **built in - inox panel**  
prezzo/price € **1.302,00**

**UP-RIGHT**

formato/size **cm 90**  
classe energetica/energy class **A**  
finitura/finishing **built in - inox panel**  
prezzo/price € **1.395,00**

Kit installazione SDD16-SDD17 con SEM1 e SEM2	€ 78,00
MOTOR S-DD	€ 248,00
MOTOR S-DD12/S-DD13	€ 279,00



LISTINO PREZZI - PRODOTTI ENERGY LABEL  
PRICE LIST - ENERGY LABEL PRODUCTS

## CAPPE INTEGRATE / INTEGRATED HOODS

INDUCTION HOB WITH  
INTEGRATED HOOD



SDDH3

INDUCTION HOB WITH  
CONNECTIVITY SYSTEM



SDDH4



SDDH1 / SDDH2





LISTINO PREZZI - PRODOTTI ENERGY LABEL  
PRICE LIST - ENERGY LABEL PRODUCTS

**CAPPE INTEGRATE**  
**/ INTEGRATED HOODS**

**SDDH1 EM**

formato/size cm **898x630**  
4 zone induzione / 4 *induction zones*  
classe energetica/energy class **B**  
finitura/finishing **inox / glass**  
prezzo/price € **4.495,00**

**SDDH2 EM**

formato/size cm **898x510**  
3 zone induzione / 3 *induction zones*  
classe energetica/energy class **B**  
finitura/finishing **inox / glass**  
prezzo/price € **4.185,00**

**SDDH3 EM**

formato/size cm **898x630**  
4 zone induzione / 4 *induction zones*  
classe energetica/energy class **A+**  
finitura/finishing **glass**  
prezzo/price € **2.945,00**

**SDDH 4 CONNECTIVITY INDUCTION**

formato/size cm **898x510**  
4 zone induzione / 4 *induction zones*  
finitura/finishing **glass**  
prezzo/price € **2.325,00**

**SLTC 93 CONNECTIVITY**

formato/size cm **80**  
classe energetica/energy class **A**  
finitura/finishing **glass / painted glass**  
**panel** (silver, gold, black)  
prezzo/price € **1.225,00**



SLTC 111 FLAT



SLTC 110 TECH



SLTC 103 SQUARES



SLT 104 SNOOP



SLT 105 APPLIQUE



SLT 106 LINK



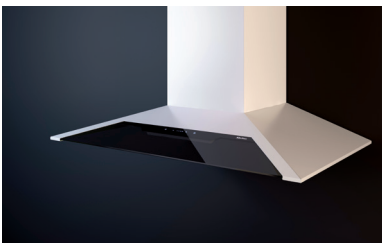
SLTC 94 ECLIPSE



SLTC 95 TAKSIM



SLTC 93 SKINNY



SLTC 97 JEEG



SLTR 75



SLTC 75



SL 91 TC



SL 90 TC



SL TC 107



LISTINO PREZZI - PRODOTTI ENERGY LABEL  
PRICE LIST - ENERGY LABEL PRODUCTS

## CAPPE A MURO / WALL HOODS



SL 107



SL TC 92



SL 92



SL 89



MO 207



MO 208



SL 31



**SLTC 110 TECH**

formato/size *cm 80*  
classe energetica/energy class **A+**  
finitura/finishing **polished stainless steel / glass** (white, black)  
prezzo/price € **1.194,00** (white)  
prezzo/price € **1.163,00** (black)

**SLTC 111 FLAT**

formato/size *cm 80*  
classe energetica/energy class **A**  
finitura/finishing **polished stainless steel / glass** (white, black)  
prezzo/price € **1.240,00** (white)  
prezzo/price € **1.209,00** (black)

**SLTC 103 SQUARES**

formato/size *cm 70*  
classe energetica/energy class **A**  
finitura/finishing **glass / painted ceramic panel** (silver, gold, black)  
prezzo/price € **1.364,00**

**SLT 104 SNOOP**

formato/size *cm 59,5*  
finitura/finishing **ceramic** (silver, gold, white, copper)  
prezzo/price € **1.488,00**

**SLT 105 APPLIQUE**

formato/size *cm Ø 48*  
finitura/finishing **painted stainless steel** (black, gold, white, copper)  
prezzo/price € **1.333,00**

**SLT 106 LINK**

formato/size *cm 59,5*  
finitura/finishing **ceramic** (silver, gold, white, copper)  
prezzo/price € **1.457,00**

**SLTC 94 ECLIPSE**

formato/size *cm Ø 80*  
classe energetica/energy class **A**  
finitura/finishing **glass / painted ceramic panel** (silver, gold, black)  
prezzo/price € **1.240,00**

**SLTC 95 TAKSIM**

formato/size *cm 67*  
classe energetica/energy class **A**  
finitura/finishing **stainless steel / glass** (black, white)  
prezzo/price € **1.163,00**

**SLTC 93 SKINNY**

formato/size *cm 80 / 60*  
classe energetica/energy class **A**  
finitura/finishing **glass / painted glass panel** (silver, gold, black)  
prezzo/price *cm 60* € **1.039,00**  
*cm 80* € **1.085,00**

**SLTC 97 JEEG**

formato/size *cm 90*  
classe energetica/energy class **A**  
finitura/finishing **painted** (black, white)  
prezzo/price € **1.054,00**

**SLTR 75**

formato/size *cm 60*  
classe energetica/energy class **B**  
finitura/finishing **polished stainless steel / glass**  
prezzo/price € **1.736,00**

**SLTR 75**

formato/size *cm 90*  
classe energetica/energy class **A+**  
finitura/finishing **polished stainless steel / glass**  
prezzo/price € **1.829,00**

**SLTC 75**

formato/size *cm 60*  
classe energetica/energy class **B**  
finitura/finishing **polished stainless steel / glass**  
prezzo/price € **1.736,00**

**SLTC 75**

formato/size *cm 90*  
classe energetica/energy class **A+**  
finitura/finishing **polished stainless steel / glass**  
prezzo/price € **1.829,00**

**SL 91 TC**

formato/size *cm 80*  
classe energetica/energy class **A**  
finitura/finishing **black glass panel**  
prezzo/price € **961,00**

**SL 91 TC**

formato/size *cm 80*  
classe energetica/energy class **A**  
finitura/finishing **white glass panel**  
prezzo/price € **1.023,00**

**SL 90 TC**

formato/size *cm 55*  
classe energetica/energy class **A**  
finitura/finishing **black glass panel**  
prezzo/price € **884,00**

**SL 90 TC**

formato/size *cm 55*  
classe energetica/energy class **A**  
finitura/finishing **white glass panel**  
prezzo/price € **946,00**

**SLTC 107**

formato/size *cm 90*  
classe energetica/energy class **A**  
finitura/finishing **glass / inox**  
prezzo/price € **1.302,00**



LISTINO PREZZI - PRODOTTI ENERGY LABEL  
PRICE LIST - ENERGY LABEL PRODUCTS

CAPPE A MURO  
/ WALL HOODS

**SL 107**

formato/size *cm 90*  
classe energetica/energy class **A**  
finitura/finishing **inox**  
prezzo/price € **1.225,00**

**SLTC 92**

formato/size *cm 90*  
classe energetica/energy class **A**  
finitura/finishing **inox / black glass**  
prezzo/price € **915,00**

**SL 92**

formato/size *cm 90*  
classe energetica/energy class **A**  
finitura/finishing **stainless steel**  
prezzo/price € **853,00**

**SL 89**

classe energetica/energy class **A**  
finitura/finishing **inox / glass**  
prezzo/price *cm 55* € **744,00**  
prezzo/price *cm 80* € **806,00**

**MO 207**

formato/size *cm 40*  
classe energetica/energy class **A**  
finitura/finishing **inox 304**  
prezzo/price € **1.008,00**

**MO 208**

formato/size *cm Ø 36,2*  
classe energetica/energy class **A**  
finitura/finishing **inox 304**  
prezzo/price € **1.039,00**

**SL 31**

formato/size *cm 60 / 90 / 120*  
classe energetica/energy class **A**  
finitura/finishing **inox**  
prezzo/price *cm 60* € **760,00**  
prezzo/price *cm 90* € **806,00**  
prezzo/price *cm 120* € **946,00**

**SL-EM 31**

formato/size *cm 60 / 90*  
classe energetica/energy class **A**  
finitura/finishing **inox**  
prezzo/price *cm 60* € **713,00**  
prezzo/price *cm 90* € **760,00**



LISTINO PREZZI - PRODOTTI ENERGY LABEL  
PRICE LIST - ENERGY LABEL PRODUCTS

## GRUPPI INCASSO / BUILT-IN PRODUCTS



SLTC 919 WING



SL 913



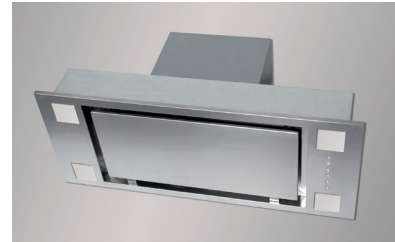
SL 914



SL 907



SL 906 LED



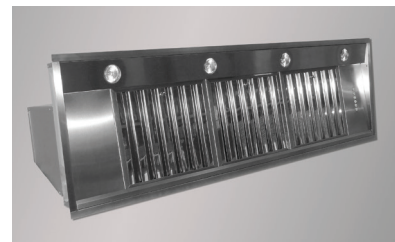
SL 903 P



SL 900



SM 905



SL 909 1M



SL 921



#### SL 921

formato/size cm 52 / 78  
classe energetica/energy class **A**  
finitura/finishing **stainless steel /  
glass panel**  
prezzo/price cm 52 € 729,00  
prezzo/price cm 78 € 806,00

#### SLTC 919 WING

formato/size cm 52 / 85  
classe energetica/energy class **A (52)**  
classe energetica/energy class **A+ (85)**  
finitura/finishing **stainless steel /  
glass panel**  
prezzo/price cm 52 € 729,00  
prezzo/price cm 85 € 806,00

#### SL 913

formato/size cm 52 / 78  
classe energetica/energy class **A**  
finitura/finishing **white painted / white  
glass**  
prezzo/price cm 52 € 729,00  
prezzo/price cm 78 € 806,00

#### SL 914

formato/size cm 52 / 78  
classe energetica/energy class **A**  
finitura/finishing **white painted / white  
glass**  
prezzo/price cm 52 € 620,00  
prezzo/price cm 78 € 667,00

#### SL 907

formato/size cm 52 / 70  
classe energetica/energy class **B**  
finitura/finishing **inox / light**  
prezzo/price cm 52 € 713,00  
prezzo/price cm 70 € 760,00

#### SL 906 LED

formato/size cm 52 / 85 / 100  
classe energetica/energy class **A**  
finitura/finishing **inox / light**  
prezzo/price cm 52 € 760,00  
prezzo/price cm 85 € 822,00  
prezzo/price cm 100 € 853,00

#### SL 903 P

formato/size cm 70 / 90  
classe energetica/energy class **A**  
finitura/finishing **inox**  
prezzo/price cm 70 € 698,00  
prezzo/price cm 90 € 744,00

#### SL EM 903 P

formato/size cm 70 / 90  
classe energetica/energy class **B**  
finitura/finishing **inox**  
prezzo/price cm 70 € 636,00  
prezzo/price cm 78 € 682,00

#### SL 900

formato/size cm 52 / 70  
classe energetica/energy class **A**  
finitura/finishing **inox**  
prezzo/price cm 52 € 512,00  
prezzo/price cm 70 € 527,00

#### SLT 900

formato/size cm 52 / 70  
classe energetica/energy class **A**  
finitura/finishing **inox**  
prezzo/price cm 52 € 589,00  
prezzo/price cm 70 € 620,00

#### SM 900

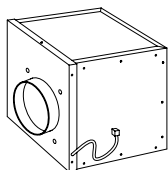
formato/size cm 52 / 70  
classe energetica/energy class **B**  
finitura/finishing **inox**  
prezzo/price cm 52 € 403,00  
prezzo/price cm 70 € 419,00

#### SM 905

formato/size cm 52 / 85  
classe energetica/energy class **B**  
finitura/finishing **inox**  
prezzo/price cm 52 € 434,00  
prezzo/price cm 85 € 465,00

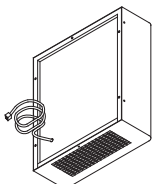
#### SL 909 1M

formato/size cm 86 / 140  
classe energetica/energy class **A**  
finitura/finishing **inox**  
prezzo/price cm 86 € 899,00  
prezzo/price cm 140 € 1.023,00



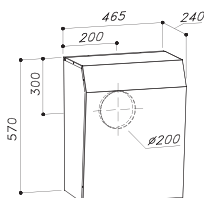
**SEM 1**

remote motor for indoor  
price € 403,00



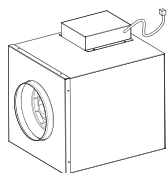
**SEM 2**

remote motor for outdoor  
price € 775,00



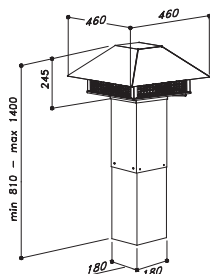
**SEM 7**

remote motor for outdoor  
price € 1.535,00



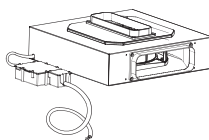
**SEM 8**

remote motor for indoor  
price € 806,00



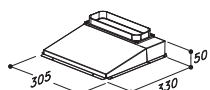
**SEM 9**

remote motor for outdoor  
price € 1.240,00



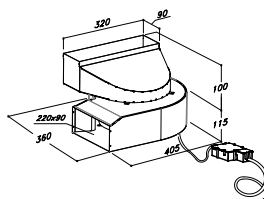
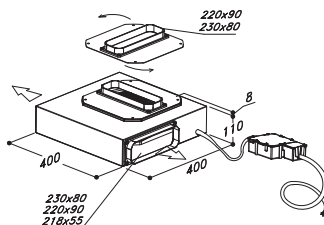
**SEM 10**

remote motor for indoor  
price € 574,00



**SEM 12**

remote motor for indoor  
price € 775,00



**SEM 16**

remote motor for indoor  
price € 775,00

**I NOSTRI MODELLI / OUR MODELS**

SL /SIL: versione lusso / luxury version

SL-TC /SIL-TC: elettronica touch control / touch control electronic

SLTR: comando rotativo / rotative knob

SL-P: aspirazione perimetrale / perimetrical suction

SM: versione media / medium version

S-DD: sirius downdraft

S-DD/L: sirius downdraft con luce / sirius downdraft with light

UPRIGHT: aspirazione verticale / vertical suction

/L: versione con luce e cornice incasso ambiente / luxury version with ambient light

SLT SILT: telecomando / control unit

**DIMMER LIGHT / AMBIENT LIGHT**

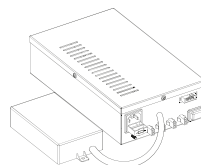
**LE NOSTRE FINITURE  
OUR FINISHING**

ceramic: ceramica / ceramic

inox: inox / stainless steel

inox/glass: inox-vetro / stainless steel-glass

verniciato / painted



**SCET 1**

control unit sem  
price € 450,00

**SCET 2**

control unit sem  
price € 496,00

**SCET 3**

control unit sem  
price € 543,00





**LISTINO PREZZI - PRODOTTI ENERGY LABEL**  
**PRICE LIST - ENERGY LABEL PRODUCTS**

**Sirius**

**FILTRI CARBONE**  
**/ CARBON FILTERS**

	Model	price/unit	High perf.	price/unit*
SL31 90, SL31 120 (2pz/pc), SLT951 (2pz/pc), SLT958, SL111, SL970, SLT971	KF2	€ 31,00	HP2	€ 87,00
MO207, MO208, MO404, MO405	KF3	€ 22,00	HP3	€ 62,00
S-DD4 (2pz/pc), SL900, SM900, SL907 70 (2pz/pc), SILT21, MO406, SL91 (2pz/pc), SL93 (2pz)	KF4	€ 16,00	HP4	€ 40,00
SL89, SL90, SL94, SLT965 (2pz/pc), SLTC103, SLT958 - 968 h200	KF5	€ 31,00	HP5	€ 68,00
SL 909 86 (2pz/pc), 1400 (3pz/pc)	KF7	€ 31,00	HP7	€ 68,00
SL906 85 (2pz/pc), SL913 52, SLTC919 85 (2pz/pc)	KF8	€ 31,00	HP8	€ 50,00
S-DD2 90 (2pz/pc)	KF9	€ 31,00	HP9	€ 47,00
S-DD2 60 (2pz/pc), S-DD3	KF10	€ 19,00	HP10	€ 37,00
SL913 78 (KF11 + KF17), SL907 52, SL 914 52, SL 914 78 (KF11 + KF4)	KF11	€ 31,00	HP11	€ 47,00
S-DD2 120 (2pz/pc)	KF12	€ 31,00	HP12	€ 56,00
SL 903-P, SL921	KF13	€ 31,00	HP13	€ 56,00
SILT18	KF16	€ 16,00	HP16	€ 68,00
S-DD16 (2pz/pc), SM905 52, SM905 85 (2pz/pc)	KF17	€ 31,00	HP17	€ 56,00
SL75 90 (2pz)	KF18	€ 31,00	HP18	€ 50,00
SL906 100	KF19	€ 31,00	HP19	€ 62,00
SL107 (2pz/pc)	KF23	€ 47,00	HP23	€ 109,00
SL92, SIL24	KF28	€ 62,00	HP28	€ 124,00
SL75 60	KF29	€ 31,00	HP29	€ 47,00
SLT 960 (2pz/pc), SLTC919 52, SLT968 (2pz/pc)	KF30	€ 47,00	HP30	€ 62,00
SL95 (con griglia / with frame)	KF31	€ 62,00	HP31	€ 180,00
S-DD12 (2pz/pc), SL110 (2pz/pc) (con griglia / with frame)	KF32	€ 39,00	HP32	€ 133,00
S-DD11 (2pz/pc) (con griglia / with frame)	KF33	€ 31,00	HP33	€ 56,00
SLTC97	KF35	€ 75,00	HP35	€ 124,00
SILT26, SLT962, SILT27 (con griglia / with frame)	KF38 W	€ 99,00	HP38	€ 202,00
SLT 105, SILT 28	KF39 W	€ 47,00	HP39	€ 78,00
SLT104, SLT106 (con griglia / with frame)	KF40 W	€ 47,00	HP40	€ 112,00
UPRIGHT (con griglia / with frame)	KF41 W	€ 31,00	HP41	€ 62,00
SLT 966 (con griglia / with frame)	KF42 W	€ 62,00	HP42	€ 161,00
SLT 967 (con griglia / with frame)	KF43 W	€ 47,00	HP43	€ 68,00
S-DD13 (con griglia / with frame)	KF44 W	€ 93,00	HP44	€ 140,00
S-DD17	KF45 W	€ 31,00	HP45	€ 56,00
S-DDH3	KF46	€ 31,00	HP46	€ 62,00
S-DD18 (2pz/pc)	KF48	€ 31,00	HP48	€ 47,00
BASE HIGH EFFICIENCY FILTER UNIT FOR DOWNDRAFT	-		KFHE2	€ 372,00
FILTER for KFHE.2	-		HP36	€ 217,00

\* I FILTRI HP DISPONIBILI IN SCATOLE DA 10 PEZZI / HP FILTERS ARE ONLY AVAILABLE IN 10 PIECES PACKAGE  
 KF = STANDARD CARBON FILTER; KFW = WASHABLE CARBON FILTER; HP = HIGH EFFICIENCY CARBON FILTER



LISTINO PREZZI - PRODOTTI ENERGY LABEL  
PRICE LIST - ENERGY LABEL PRODUCTS

**DOWNDRAFT  
UPRIGHT**

Product name	Dim.	Motor	Model Identifier	Energy efficiency Class EEC	Annual Energy Consumption AEEhood	Fluid Dynamic Efficiency FDE	Light Efficiency Class LE	Grease Filtering Efficiency Class GFE	Weighted Sound Power Emission at maximum speed dB(A)	Air Flow at intensive /boost setting QMAX	Lighting W
SDD2 INOX	580	on-board	D002058PB128XX07	A	45,9	A	n/a	E	69	636	no
SDD2_EM INOX	580	SEM1	D002058PB129XX07	A	44,6	B	n/a	E	66	595	no
SDD2_EM INOX	580	SEM2	D002058PB115XX07	C	83	C	n/a	E	68	577	no
SDD2_EM INOX	580	SEM8	D002058PB117XX07	C	101,1	C	n/a	E	70	622	no
SDD2_EM INOX	580	SEM10	D002058PB130XX07	B	52,2	C	n/a	E	67	478	no
SDD2 INOX	875	on-board	D002088PB128XX05	A+	40,9	A	n/a	E	68	757	no
SDD2_EM INOX	875	SEM1	D002088PB129XX05	B	50,9	A	n/a	E	59	682	no
SDD2_EM INOX	875	SEM2	D002088PB115XX05	B	79,3	C	n/a	E	62	731	no
SDD2_EM INOX	875	SEM8	D002088PB117XX05	C	99	B	n/a	F	64	753	no
SDD2_EM INOX	875	SEM10	D002088PB130XX05	B	50,6	C	n/a	E	61	530	no
SDD2 TC	580	on-board	D002058TC128XX07	A	45,9	A	n/a	E	69	636	no
SDD2_EM TC	580	SEM1	D002058TC129XX07	A	44,6	B	n/a	E	66	595	no
SDD2_EM TC	580	SEM2	D002058TC115XX07	C	83	C	n/a	E	68	577	no
SDD2_EM TC	580	SEM8	D002058TC117XX07	C	101,1	C	n/a	E	70	622	no
SDD2_EM TC	580	SEM10	D002058TC130XX07	B	52,2	C	n/a	E	67	478	no
SDD2 TC	875	on-board	D002088TC128XX05	A+	40,9	A	n/a	E	68	757	no
SDD2_EM TC	875	SEM1	D002088TC129XX05	B	50,9	A	n/a	E	59	682	no
SDD2_EM TC	875	SEM2	D002088TC115XX05	B	79,3	C	n/a	E	62	731	no
SDD2_EM TC	875	SEM8	D002088TC117XX05	C	99	B	n/a	F	64	753	no
SDD2_EM TC	875	SEM10	D002088TC130XX05	B	50,6	C	n/a	E	61	530	no
SDD2-L INOX	580	on-board	D002058PB1281116	B	51,7	A	E	E	69	636	1x8
SDD2-L-EM INOX	580	SEM1	D002058PB1291116	B	50,5	B	E	E	66	595	1x8
SDD2-L-EM INOX	580	SEM2	D002058PB1151116	C	88,9	C	E	E	68	577	1x8
SDD2-L-EM INOX	580	SEM8	D002058PB1171116	C	106,9	C	E	E	70	622	1x8
SDD2-L-EM INOX	580	SEM10	D002058PB1301116	C	58,1	C	E	E	67	478	1x8
SDD2-L INOX	875	on-board	D002088PB1281415	A	51,1	A	E	E	68	757	1x14
SDD2-L-EM INOX	875	SEM1	D002088PB1291415	B	61,1	A	E	E	59	682	1x14
SDD2-L-EM INOX	875	SEM2	D002088PB1151415	C	89,5	C	E	E	62	731	1x14
SDD2-L-EM INOX	875	SEM7 Ø150	D002088PB1161415	A	115,8	A	E	F	72	1142	1x14
SDD2-L-EM INOX	875	SEM7 Ø200	D002088PB1161415	A	119,4	A	E	F	74	1328	1x14
SDD2-L-EM INOX	875	SEM8	D002088PB1171415	C	109,2	B	E	F	64	753	1x14



LISTINO PREZZI - PRODOTTI ENERGY LABEL  
PRICE LIST - ENERGY LABEL PRODUCTS

Product name	Dim.	Motor	Model Identifier	Energy efficiency Class EEC	Annual Energy Consumption AEC <sub>hood</sub>	Fluid Dynamic Efficiency FDE	Light Efficiency Class LE	Grease Filtering Efficiency Class GFE	Weighted Sound Power Emission at maximum speed dB(A)	Air Flow at intensive/boost setting QMAX	Lighting W
SDD2-L-EM INOX	875	SEM10	D002088PB1301405	C	60,8	C	E	E	61	530	1x14
SDD2-L-EM INOX	875	SEM12	D002088PB1311405	B	71,7	A	E	E	68	668	1x14
SDD2-L INOX LED	875	on-board	D002088PB1282415	A	44,5	A	A	E	68	757	1x5
SDD2-L-EM INOX LED	875	SEM1	D002088PB1292415	B	54,5	A	A	E	59	682	1x5
SDD2-L-EM INOX LED	875	SEM2	D002088PB1152415	C	82,9	C	A	E	62	731	1x5
SDD2-L-EM INOX LED	875	SEM7 Ø150	D002088PB1162415	A+	109,2	A	A	F	72	1142	1x5
SDD2-L-EM INOX LED	875	SEM7 Ø200	D002088PB1162415	A+	112,9	A	A	F	74	1328	1x5
SDD2-L-EM INOX LED	875	SEM8	D002088PB1172415	C	102,6	B	A	F	64	753	1x5
SDD2-L-EM INOX LED	875	SEM10	D002088PB1302415	C	54,3	C	A	E	61	530	1x5
SDD2-L-EM INOX LED	875	SEM12	D002088PB1312415	A	59	A	A	E	68	668	1x5
SDD2-L INOX	1175	on-board	D002118PB1281317	B	60,7	A	F	E	65	791	1x21
SDD2-L-EM INOX	1175	SEM1	D002118PB1291317	B	58,7	A	F	E	55	736	1x21
SDD2-L-EM INOX	1175	SEM2	D002118PB1151317	C	99,4	B	F	E	57	738	1x21
SDD2-L-EM INOX	1175	SEM8	D002118PB1171317	C	107,3	B	F	F	60	807	1x21
SDD2-L-EM INOX	1175	SEM10	D002118PB1301317	C	67,1	C	F	E	59	559	1x21
SDD2-L TC	580	on-board	D002058TC1281116	B	51,7	A	E	E	69	636	1x8
SDD2-L-EM TC	580	SEM1	D002058TC1291116	B	50,5	B	E	E	66	595	1x8
SDD2-L-EM TC	580	SEM2	D002058TC1151116	C	88,9	C	E	E	68	577	1x8
SDD2-L-EM TC	580	SEM8	D002058TC1171116	C	106,9	C	E	E	70	622	1x8
SDD2-L-EM TC	580	SEM10	D002058TC1301116	C	58,1	C	E	E	67	478	1x8
SDD2-L TC	875	on-board	D002088TC1281415	A	51,1	A	E	E	68	757	1x14
SDD2-L-EM TC	875	SEM1	D002088TC1291415	B	61,1	A	E	E	59	682	1x14
SDD2-L-EM TC	875	SEM2	D002088TC1151415	C	89,5	C	E	E	62	731	1x14
SDD2-L-EM TC	875	SEM7 Ø150	D002088TC1161415	A	115,8	A	E	F	72	1142	1x14
SDD2-L-EM TC	875	SEM7 Ø200	D002088TC1161415	A	119,4	A	E	F	74	1328	1x14



LISTINO PREZZI - PRODOTTI ENERGY LABEL  
PRICE LIST - ENERGY LABEL PRODUCTS

**DOWNDRAFT  
UPRIGHT**

Product name	Dim.	Motor	Model Identifier	Energy efficiency Class EEC	Annual Energy Consumption AEEchood	Fluid Dynamic Efficiency FDE	Light Efficiency Class LE	Grease Filtering Efficiency Class GFE	Weighted Sound Power Emission at maximum speed dB(A)	Air Flow at intensive /boost setting Qmax	Lighting W
SDD2-L-EM TC	875	SEM8	D002088TC1171415	C	109,2	B	E	F	64	753	1x14
SDD2-L-EM TC	875	SEM10	D002088TC1301405	C	60,8	C	E	E	61	530	1x14
SDD2-L-EM TC	875	SEM12	D002088TC1311405	B	71,7	A	E	E	68	668	1x14
SDD2-L TC LED	875	on-board	D002088TC1282415	A	44,5	A	A	E	68	757	1x5
SDD2-L-EM TC LED	875	SEM1	D002088TC1292415	B	54,5	A	A	E	59	682	1x5
SDD2-L-EM TC LED	875	SEM2	D002088TC1152415	C	82,9	C	A	E	62	731	1x5
SDD2-L-EM TC LED	875	SEM7 Ø150	D002088TC1162415	A+	109,2	A	A	F	72	1142	1x5
SDD2-L-EM TC LED	875	SEM7 Ø200	D002088TC1162415	A+	112,9	A	A	F	74	1328	1x5
SDD2-L-EM TC LED	875	SEM8	D002088TC1172415	C	102,6	B	A	F	64	753	1x5
SDD2-L-EM TC LED	875	SEM10	D002088TC1302415	C	54,3	C	A	E	61	530	1x5
SDD2-L-EM TC LED	875	SEM12	D002088TC1312415	A	59	A	A	E	68	668	1x5
SDD2-L TC	1175	on-board	D002118TC1281317	B	60,7	A	F	E	65	791	1x21
SDD2-L-EM TC	1175	SEM1	D002118TC1291317	B	58,7	A	F	E	55	736	1x21
SDD2-L-EM TC	1175	SEM2	D002118TC1151317	C	99,4	B	F	E	57	738	1x21
SDD2-L-EM TC	1175	SEM8	D002118TC1171317	C	107,3	B	F	F	60	807	1x21
SDD2-L-EM TC	1175	SEM10	D002118TC1301317	C	67,1	C	F	E	59	559	1x21
SDD3_TC	520	on-board	D003052TC128XX07	A	45,9	A	n/a	E	69	636	no
SDD3_EM_TC	520	SEM1	D003052TC129XX07	A	44,6	B	n/a	E	66	595	no
SDD3_EM_TC	520	SEM2	D003052TC115XX07	C	83	C	n/a	E	68	577	no
SDD3_EM_TC	520	SEM8	D003052TC117XX07	C	101,1	C	n/a	E	70	622	no
SDD3_EM_TC	520	SEM10	D003052TC130XX07	B	52,2	C	n/a	E	67	478	no
SDD4_TC	880	on-board	D004088TC1281415	A	51,1	A	E	E	68	757	1x14
SDD4_EM_TC	880	SEM1	D004088TC1291415	B	61,1	A	E	E	59	682	1x14
SDD4_EM_TC	880	SEM2	D004088TC1151415	C	89,5	C	E	E	62	731	1x14
SDD4_EM_TC	880	SEM8	D004088TC1171415	C	109,2	B	E	F	64	753	1x14
SDD4_EM_TC	880	SEM10	D004088TC1301415	C	60,8	C	E	E	61	530	1x14



**LISTINO PREZZI - PRODOTTI ENERGY LABEL**  
**PRICE LIST - ENERGY LABEL PRODUCTS**

<i>Product name</i>	<i>Dim.</i>	<i>Motor</i>	<i>Model Identifier</i>	<i>Energy efficiency Class</i> <i>EEC</i>	<i>Annual Energy Consumption</i> <i>AEChood</i>	<i>Fluid Dynamic Efficiency</i> <i>FDE</i>	<i>Light Efficiency Class</i> <i>LE</i>	<i>Grease Filtering Efficiency Class</i> <i>GFE</i>	<i>Weighted Sound Power Emission at maximum speed</i> <i>dB(A)</i>	<i>Air Flow at intensive/boost setting</i> <i>Qmax</i>	<i>Lighting</i> <i>W</i>
S-DD11 X	810	on-board	D011088PB1282219	B	59,6	B	F	E	68	681	2x3,9
S-DD11 EM X	810	SEM1	D011088PB1292219	B	55,4	B	F	E	59	633	2x3,9
S-DD11 EM X	810	SEM2	D011088PB1152219	C	80,2	C	F	E	62	639	2x3,9
S-DD11 EM X	810	SEM10	D011088PB1302219	C	57,9	C	F	E	70	478	2x3,9
S-DD11 EM X	810	SEM12	D011088PB1312219	C	79,7	C	F	E	71	576	2x3,9
S-DD12 TC	870	on-board	D012088TC1282339	A	49,6	A	E	E	59	687	1x12
S-DD12 EM TC	870	SEM1	D012088TC1292339	B	51,7	A	E	E	59	687	1x12
S-DD12 EM TC	870	SEM2	D012088TC1152339	B	79,4	B	E	E	62	718	1x12
S-DD12 EM TC	870	SEM8	D012088TC1172339	B	97,9	B	E	F	64	816	1x12
S-DD12 EM TC	870	SEM10	D012088TC1302339	C	57,2	C	E	E	61	530	1x12
S-DD13	880	on-board	D013088TC1283163	A	50,8	A	C	C	68	690	1x9,5
S-DD13 EM	880	SEM1	D013088TC1293163	A	48,7	A	C	C	59	660	1x9,5
S-DD13 EM	880	SEM2	D013088TC1153163	B	75,2	B	C	C	62	665	1x9,5
S-DD13 EM	880	SEM8	D013088TC1173163	C	109,4	C	C	C	64	775	1x9,5
S-DD13 EM	880	SEM10	D013088TC1303163	C	65,7	D	C	C	61	525	1x9,5
S-DD16 EM	845	SEM1	D016085TC129XX61	A	47,5	B	n/a	C	66	600	no
S-DD16 EM	845	SEM2	D016085TC115XX61	B	73,6	C	n/a	D	68	582	no
S-DD16 EM	845	SEM10	D016085TC130XX61	B	52,1	C	n/a	C	70	484	no
S-DD16 EM	845	SEM12	D016085TC131XX61	B	73,6	C	n/a	C	71	577	no
S-DD17 EM GLASS	520	SEM1	D017052TC129XX69	A	47,8	A	n/a	C	66	618	no
S-DD17 EM GLASS	520	SEM2	D017052TC115XX69	B	73,1	C	n/a	D	68	597	no
S-DD17 EM GLASS	520	SEM10	D017052TC130XX69	C	59,7	D	n/a	C	70	493	no
S-DD17 EM GLASS	520	SEM12	D017052TC131XX69	B	67,5	B	n/a	C	71	642	no
S-DD17 EM INOX	520	SEM1	D017052TC129XX69	A	47,8	A	n/a	C	66	618	no
S-DD17 EM INOX	520	SEM2	D017052TC115XX69	B	73,1	C	n/a	D	68	597	no
S-DD17 EM INOX	520	SEM10	D017052TC130XX69	C	59,7	D	n/a	C	70	493	no
S-DD17 EM INOX	520	SEM12	D017052TC131XX69	B	67,5	B	n/a	C	71	642	no



LISTINO PREZZI - PRODOTTI ENERGY LABEL  
PRICE LIST - ENERGY LABEL PRODUCTS

## DOWNDRAFT UPRIGHT

Product name	Dim.	Motor	Model Identifier	Energy efficiency Class EEC	Annual Energy Consumption AEEhood	Fluid Dynamic Efficiency FDE	Light Efficiency Class LE	Grease Filtering Efficiency Class GFE	Weighted Sound Power Emission at maximum speed dB(A)	Air Flow at intensive /boost setting Qmax	Lighting W
S-DD18	880	on-board	D018088TC1282472	A	50,7	A	A	E	67	730	1x5
S-DD18 EM	880	SEM1	D018088TC1292472	A	46,8	A	A	E	61	665	1x5
S-DD18 EM	880	SEM2	D018088TC1152472	C	81,6	C	A	E	63	682	1x5
S-DD18 EM	880	SEM8	D018088TC1172472	B	93,9	B	A	F	66	787	1x5
S-DD18 EM	880	SEM10	D018088TC1302472	B	51,7	C	A	E	65	575	1x5
S-DD18 EM	880	SEM12	D018088TC1312472	A	58,7	A	A	E	73	715	1x5
UPRIGHT BUILT-IN	800	on-board	U001087PB1280262	A	48,5	A	B	F	68	755	1x10,5
UPRIGHT-EM BUILT-IN	800	SEM1	U001087PB1290262	A	55	A	B	F	59	685	1x10,5
UPRIGHT-EM BUILT-IN	800	SEM2	U001087PB1150262	C	91	C	B	F	62	763	1x10,5

## CEILING HOODS

Product name	Motor	Model Identifier	Energy efficiency Class EEI	Annual Energy Consumption AEEhood	Fluid Dynamic Efficiency FDE	Light Efficiency Class LE	Grease Filtering Efficiency Class GFE	Weighted Sound Power Emission at maximum speed dB(A)	Air Flow at intensive /boost setting Qmax	Lighting W
SLT951 EM	SEM1	C951110RC1291037	C	89	A	F	F	57	706	4x16
SLT951 EM	SEM2	C951110RC1151037	C	129,5	B	F	F	61	773	4x16
SLT958	on-board	C958090RC1280137	A	54,8	A	B	F	67	758	2X6,5
SLT958 EM	SEM1	C958090RC1290137	B	63,1	B	B	F	55	670	2X6,5
SLT958 EM	SEM2	C958090RC1150137	B	73,4	A	B	F	59	790	2X6,5
SLT958 W	on-board	C958090RC1280137	A	54,8	A	B	F	67	758	2X6,5
SLT958 EM W	SEM1	C958090RC1290137	B	63,1	B	B	F	55	670	2X6,5
SLT958 EM W	SEM2	C958090RC1150137	B	73,4	A	B	F	59	790	2X6,5
SLT958 h200	on-board	C958090RC1240173	B	58,9	C	B	F	63	600	2X6,5
SLT958 h200 BRH	on-board	C958090RC1270173	B	70,6	A	B	F	66	760	2X6,5
SLT958 h200 W	on-board	C958090RC1240173	B	58,9	C	B	F	63	600	2X6,5
SLT958 h200 W BRH	on-board	C958090RC1270173	B	70,6	A	B	F	66	760	2X6,5
SLT960	on-board	C960110RC1283435	B	59,6	A	D	F	66	753	2x12
SLT960 EM	SEM1	C960110RC1293435	B	74,3	B	D	F	65	681	2x12
SLT960 EM	SEM2	C960110RC1153435	C	88,3	B	D	F	71	736	2x12



LISTINO PREZZI - PRODOTTI ENERGY LABEL  
PRICE LIST - ENERGY LABEL PRODUCTS

Product name	Dim.	Motor	Model Identifier	Energy efficiency Class EEC	Annual Energy Consumption AEEhood	Fluid Dynamic Efficiency FDE	Light Efficiency Class LE	Grease Filtering Efficiency Class GFE	Weighted Sound Power Emission at maximum speed dB(A)	Air Flow at intensive/boost setting Qmax	Lighting W
SLT962		on-board	C962090RC1241940	C	63,3	C	D	F	61	604	1x20
SLT962 EM		SEM1	C962090RC1291940	B	74,6	B	D	F	65	602	1x20
SLT962 EM		SEM2	C962090RC1151940	C	101,8	C	D	F	71	610	1x20
SLT966		on-board	C966100RC1243268	B	56,4	C	C	F	63	615	2x5
SLT966 BRH		on-board	C966100RC1273268	B	68,6	B	C	F	68	757	2x5
SLT966 EM		SEM1	C966100RC1293268	A	51,3	A	C	F	71	675	2x5
SLT966 EM		SEM2	C966100RC1153268	B	79,2	B	C	F	71	691	2x5
SLT967		on-board	C967100RC1242565	C	71,8	C	O	F	63	615	2x15,5
SLT967 BRH		on-board	C967100RC1272565	B	84	B	O	F	68	757	2x15,5
SLT967 EM		SEM1	C967100RC1292565	B	66,6	A	O	F	71	675	2x15,5
SLT967 EM		SEM2	C967100RC1152565	C	94,5	B	O	F	71	691	2x15,5
SLT968		on-board	C968110RC1283335	A	51,2	A	C	F	67	765	2x10,5
SLT968 h200		on-board	C968110RC1243313	C	63,5	C	C	F	62	627	2x10,5
SLT968 h200		SEM1	C968110RC1293313	B	63,1	A	C	F	62	685	2x10,5
SLT968 h200		SEM2	C968110RC1153313	B	87,1	B	C	F	63	730	2x10,5
SLT968 W		on-board	C968110RC1283335	A	51,2	A	C	F	67	765	2x10,5
SLT968 h200 W		on-board	C968110RC1243313	C	63,5	C	C	F	62	627	2x10,5
SLT968 h200 W		SEM1	C968110RC1293313	B	63,1	A	C	F	62	685	2x10,5
SLT968 h200 W		SEM2	C968110RC1153313	B	87,1	B	C	F	63	730	2x10,5
SLT970		on-board	C970100RC1243643	B	53,7	C	C	F	63	600	3x2,5
SLT970 BRH		on-board	C970100RC1273643	A	60,7	A	C	F	70	760	3x2,5
SLT970 EM		SEM1	C970100RC1293643	B	54,8	A	C	F	61	665	3x2,5
SLT970 EM		SEM2	C970100RC1153643	C	84	C	C	F	65	693	3x2,5
SLT971	900	on-board	C971090RC1243637	B	53,7	C	A	F	64	600	3x2,5
SLT971 BRH	900	on-board	C971090RC1273637	A	60,4	A	A	F	66	775	3x2,5
SLT971 EM	900	SEM1	C971090RC1293637	B	54,8	A	A	F	61	665	3x2,5
SLT971 EM	900	SEM2	C971090RC1153637	C	84	C	A	F	65	693	3x2,5
SLT971	1200	on-board	C971120RC1243637	B	55,5	C	A	F	64	610	4x2,5
SLT971 BRH	1200	on-board	C971120RC1273637	B	62,2	A	A	F	66	785	4x2,5
SLT971 EM	1200	SEM1	C971120RC1293637	B	56,6	A	A	F	61	675	4x2,5
SLT971 EM	1200	SEM2	C971120RC1153637	C	85,8	C	A	F	65	703	4x2,5



**LISTINO PREZZI - PRODOTTI ENERGY LABEL**  
**PRICE LIST - ENERGY LABEL PRODUCTS**

<i>Product name</i>	<i>Dim.</i>	<i>Motor</i>	<i>Model Identifier</i>	Energy efficiency Class <i>EEC</i>	Annual Energy Consumption <i>AEChood</i>	Fluid Dynamic Efficiency <i>FDE</i>	Light Efficiency Class <i>LE</i>	Grease Filtering Efficiency Class <i>GFE</i>	Weighted Sound Power Emission at maximum speed <i>dB(A)</i>	Air Flow at intensive /boost setting <i>Qmax</i>	Lighting <i>W</i>
<i>SLT971 W</i>	<i>900</i>	<i>on-board</i>	<i>C971090RC1243637</i>	<i>B</i>	<i>53,7</i>	<i>C</i>	<i>A</i>	<i>F</i>	<i>64</i>	<i>600</i>	<i>3x2,5</i>
<i>SLT971 W BRH</i>	<i>900</i>	<i>on-board</i>	<i>C971090RC1273637</i>	<i>A</i>	<i>60,4</i>	<i>A</i>	<i>A</i>	<i>F</i>	<i>66</i>	<i>775</i>	<i>3x2,5</i>
<i>SLT971 EM W</i>	<i>900</i>	<i>SEM1</i>	<i>C971090RC1293637</i>	<i>B</i>	<i>54,8</i>	<i>A</i>	<i>A</i>	<i>F</i>	<i>61</i>	<i>665</i>	<i>3x2,5</i>
<i>SLT971 EM W</i>	<i>900</i>	<i>SEM2</i>	<i>C971090RC1153637</i>	<i>C</i>	<i>84</i>	<i>C</i>	<i>A</i>	<i>F</i>	<i>65</i>	<i>693</i>	<i>3x2,5</i>
<i>SLT971 W</i>	<i>1200</i>	<i>on-board</i>	<i>C971120RC1243637</i>	<i>B</i>	<i>55,5</i>	<i>C</i>	<i>A</i>	<i>F</i>	<i>64</i>	<i>610</i>	<i>4x2,5</i>
<i>SLT971 W BRH</i>	<i>1200</i>	<i>on-board</i>	<i>C971120RC1273637</i>	<i>B</i>	<i>62,2</i>	<i>A</i>	<i>A</i>	<i>F</i>	<i>66</i>	<i>785</i>	<i>4x2,5</i>
<i>SLT971 EM W</i>	<i>1200</i>	<i>SEM1</i>	<i>C971120RC1293637</i>	<i>B</i>	<i>56,6</i>	<i>A</i>	<i>A</i>	<i>F</i>	<i>61</i>	<i>675</i>	<i>4x2,5</i>
<i>SLT971 EM W</i>	<i>1200</i>	<i>SEM2</i>	<i>C971120RC1153637</i>	<i>C</i>	<i>85,8</i>	<i>C</i>	<i>A</i>	<i>F</i>	<i>65</i>	<i>703</i>	<i>4x2,5</i>

**DECORATIVE ISLAND**

<i>Product name</i>	<i>Dim.</i>	<i>Motor</i>	<i>Model Identifier</i>	Energy efficiency Class <i>EEI</i>	Annual Energy Consumption <i>AEChood</i>	Fluid Dynamic Efficiency <i>FDE</i>	Light Efficiency Class <i>LE</i>	Grease Filtering Efficiency Class <i>GFE</i>	Weighted Sound Power Emission at maximum speed <i>dB(A)</i>	Air Flow at intensive /boost setting <i>Qmax</i>	Lighting <i>W</i>
<i>SIL 24</i>	<i>900</i>	<i>on-board</i>	<i>I024090PB1280137</i>	<i>A</i>	<i>49,3</i>	<i>A</i>	<i>B</i>	<i>A</i>	<i>70</i>	<i>730</i>	<i>2x6,5</i>
<i>SIL 24 TC</i>	<i>900</i>	<i>on-board</i>	<i>I024090PB1280137</i>	<i>A</i>	<i>49,3</i>	<i>A</i>	<i>B</i>	<i>A</i>	<i>70</i>	<i>730</i>	<i>2x6,5</i>
<i>MO404</i>		<i>on-board</i>	<i>I404036RC1282604</i>	<i>A</i>	<i>44,3</i>	<i>A</i>	<i>A</i>	<i>D</i>	<i>71</i>	<i>730</i>	<i>1x4</i>
<i>MO405</i>		<i>on-board</i>	<i>I405040RC1282604</i>	<i>A</i>	<i>44,3</i>	<i>A</i>	<i>A</i>	<i>D</i>	<i>71</i>	<i>730</i>	<i>1x4</i>
<i>MO406</i>		<i>on-board</i>	<i>I406040RC1280857</i>	<i>B</i>	<i>70,6</i>	<i>A</i>	<i>D</i>	<i>D</i>	<i>71</i>	<i>730</i>	<i>1x40</i>





**LISTINO PREZZI - PRODOTTI ENERGY LABEL**  
**PRICE LIST - ENERGY LABEL PRODUCTS**

**WALL  
HOODS**

<i>Product name</i>	<i>Dim.</i>	<i>Motor</i>	<i>Model Identifier</i>	<i>Energy efficiency Class</i> <i>EEC</i>	<i>Annual Energy Consumption</i> <i>AEChood</i>	<i>Fluid Dynamic Efficiency</i> <i>FDE</i>	<i>Light Efficiency Class</i> <i>LE</i>	<i>Grease Filtering Efficiency Class</i> <i>GFE</i>	<i>Weighted Sound Power Emission at maximum speed</i> <i>dB(A)</i>	<i>Air Flow at intensive/boost setting</i> <i>Qmax</i>	<i>Lighting</i> <i>W</i>
SL 31	600	on-board	P031060PB1280637	A	42,3	A	A	A	72	719	2x2,1
SL 31	900	on-board	P031090PB1280637	A	44,6	A	A	B	72	720	2x2,1
SL 31	1000	on-board	P031100PB1280637	A	44,6	A	A	B	72	720	2x2,1
SL 31	1200	on-board	P031120PB1280637	A	44,6	A	A	A	72	720	2x2,1
SL 31-EM	900	SEM1	P031090PB1290637	A	50,7	A	A	A	72	703	2x2,1
SL 31-EM	900	SEM2	P031090PB1150637	B	70,9	B	A	A	72	723	2x2,1
SLTR 75 (60)	600	on-board	P075060RB1010121	B	63,6	B	B	D	71	647	1x6,5
SLTR 75 (90)	900	on-board	P075090RB1280220	A+	45,6	A	B	D	71	757	1x10,5
SLTC 75 (60)	600	on-board	P075060TC1010121	B	63,6	B	B	D	71	647	1x6,5
SLTC 75 (90)	900	on-board	P075090TC1280220	A+	45,6	A	B	D	71	757	1x10,5
SL 89 55	550	on-board	P089055PB1280542	A	44,4	A	A	E	69	748	2x2,1
SL 89 80	800	on-board	P089080PB1280542	A	45,4	A	A	E	69	750	2x2,1
SL 90 55	550	on-board	P090055SL1020113	A	46,0	A	B	C	69	748	1x6,5
SL 91 80	800	on-board	P091080SL1020122	A	47,1	A	B	D	69	750	1x6,5
SLTC 92	900	on-board	P092090TC1280137	A	49,3	A	B	A	72	730	2x6,5
SL 92 X	900	on-board	P092090PB1280137	A	49,3	A	B	A	72	730	2x6,5
SLTC 93 60	600	on-board	P093060TC1280122	A	46,0	A	B	C	65	748	1x6,5
SLTC 93 80	800	on-board	P093080TC1280122	A	47,1	A	B	C	69	750	1x6,5
SLTC 94	800	on-board	P094080TC1280113	A	47,1	A	B	D	69	750	1x6,5
SLTC 95	670	on-board	P095067TC1280118	A	45,9	A	B	B	69	698	1x6,5
SLTC 97	900	on-board	P097090TC1280102	A	45,9	A	B	A	72	773	2x6,5
SLTC 103	700	on-board	P103070TC1280113	A	47,1	A	B	C	65	748	1x6,5
SL 107	900	on-board	P107090PB1280144	A	43,5	A	A	A	67	782	2x6,5
SLTC 107	900	on-board	P107090TC1280144	A	43,5	A	A	A	67	782	2x6,5
SLTC 110	800	on-board	P110080TC1280239	A+	46,1	A	A	C	64	777	1x10,5
SLTC 111	800	on-board	P111080TC1240237	A	42,9	A	A	C	60	615	1x10,5
MO207		on-board	P207040RC1282604	A	44,3	A	A	D	71	730	1x4
MO208		on-board	P208036RC1282604	A	44,3	A	A	D	71	730	1x4



**LISTINO PREZZI - PRODOTTI ENERGY LABEL**  
**PRICE LIST - ENERGY LABEL PRODUCTS**

**BUILT-IN  
 PRODUCTS**

<i>Product name</i>	<i>Dim.</i>	<i>Motor</i>	<i>Model Identifier</i>	Energy efficiency Class	Annual Energy Consumption	Fluid Dynamic Efficiency	Light Efficiency Class	Grease Filtering Efficiency Class	Weighted Sound Power Emission at maximum speed	Air Flow at intensive /boost setting	Lighting
				EEC	AEEhood	FDE	LE	GFE	dB(A)	Qmax	W
SM 900	520	on-board	G900052PB1010657	B	58,1	B	A	B	70	604	2x2,1
SM 900	700	on-board	G900070PB1010657	B	54,9	B	A	B	70	654	2x2,1
SL 900	520	on-board	G900052PB1280657	A	46,6	A	A	B	70	762	2x2,1
SL 900	700	on-board	G900070PB1280657	A	46,9	A	A	B	70	773	2x2,1
SLT 900	520	on-board	G900052RC1280657	A	46,6	A	A	B	70	762	2x2,1
SLT 900	700	on-board	G900070RC1280657	A	46,9	A	A	B	70	773	2x2,1
SL 903-P	700	on-board	G903070PB1280541	A	55,2	A	A	B	69	700	4x2,1
SL 903-P-EM	700	SEM1	G903070PB1290541	B	58,1	B	A	B	65	630	4x2,1
SL 903-P-EM	700	SEM2	G903070PB1150541	C	80,2	C	A	B	66	630	4x2,1
SL 903-P	900	on-board	G903090PB1280541	A	50,9	A	A	B	69	705	4x2,1
SL 903-P-EM	900	SEM1	G903090PB1290541	B	58,5	B	A	B	65	624	4x2,1
SL 903-P-EM	900	SEM2	G903090PB1150541	C	81,1	C	A	B	66	632	4x2,1
SM 905	520	on-board	G905052PB1010624	B	58,1	B	A	B	70	604	2x2,1
SM 905	850	on-board	G905085PB1010624	B	54,9	B	A	B	70	654	2x2,1
SL 906-L	520	on-board	G906052PB1280152	A	46,5	A	A	A	71	680	1x6,5
SL 906-L	850	on-board	G906085PB1280253	A	49,0	A	B	A	71	743	1x10,5
SL906-L	1000	on-board	G906100PB1280349	A	52,7	A	B	A	71	743	1x15,5
SL 907	520	on-board	G907052PB1281159	B	55,3	A	F	B	69	682	2x8
SL 907	700	on-board	G907070PB1281246	B	67,9	A	F	B	69	715	2x15
SL 909	856	on-board	G909086PB1282648	A	46,0	A	A	A	71	757	2x4
SL 909	1400	on-board	G909140PB1282648	A	49,2	A	A	A	71	768	4x4
SL 913	520	on-board	G913052PB1280127	A	58,8	A	D	B	69	668	1x6,5
SL 913	780	on-board	G913078PB1280227	A	52,2	A	E	B	69	721	1x10,5
SL 914	520	on-board	G914052PB1280529	A	57,1	A	A	B	69	668	2x2,1
SL 914	780	on-board	G914078PB1280524	A	55,7	A	A	B	69	721	2x2,1
SL 919	520	on-board	G919052TC1280166	A	46,5	A	A	A	71	680	1x6,5
SL 919	850	on-board	G919085TC1280267	A+	45,6	A	B	A	71	772	1x10,5
SL 921	520	on-board	G921052PB1283641	A	57,7	A	A	B	69	668	2x2,5
SL 921	780	on-board	G921078PB1283641	A	48,2	A	A	B	69	721	2x2,5



**Sirius**

**SIRIUS S.p.a.**

Zona Ind.le Berbentina 6/A

60041 Sassoferrato (An)

Tel. +39 0732.97171

Fax. +39 0732.95493

